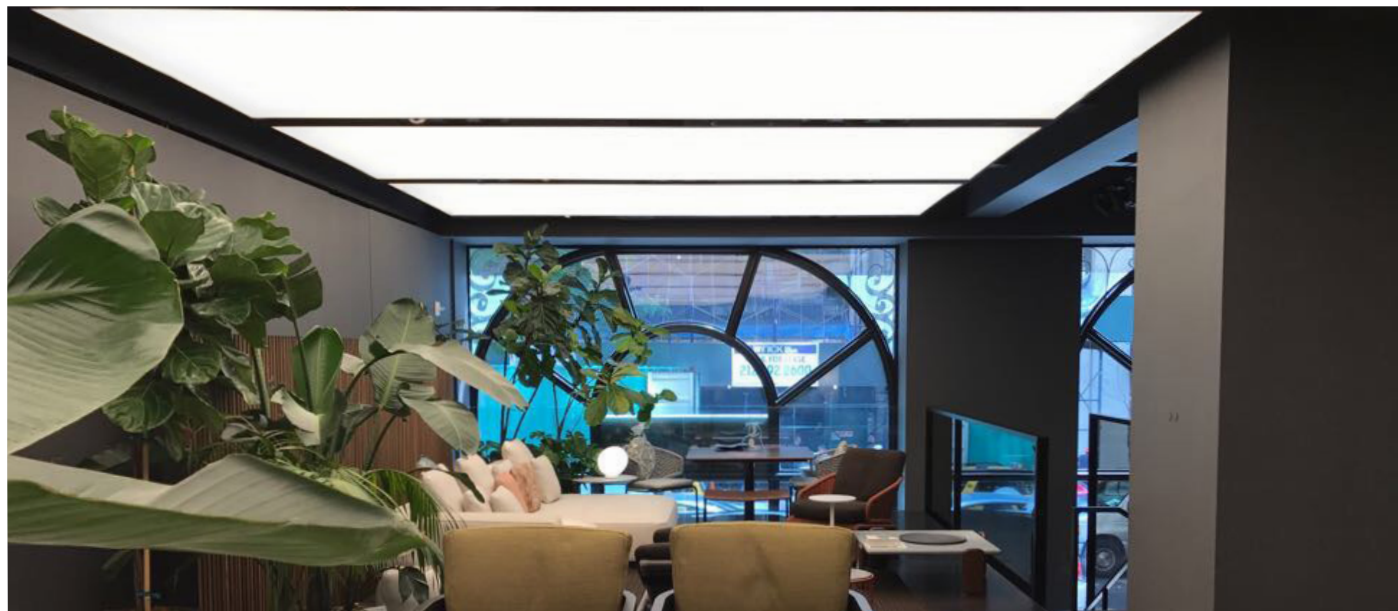


COOLEGE™

SURFACES - Surface Mount

Surface mounted SURFACES are used in segmented ceilings to maximize the feeling of openness and volume or to blend with the ceiling finish



INTEGRAL

Low Profile

Mounts directly to the ceiling surface with thin profile that creates a large scale luminous surface that gives the impression of volume

Immersive Illumination

Segmented ceiling designs using wide area SURFACES deliver a surprising amount of light without visual discomfort

Adaptable

Choice of a single color temperature, tunable white, or dim-to-warm options - all dimmable to 0.05%

No Special Site Requirements

Knitted fabric is easily stretched and held in place without need to remove equipment or isolate the space

Size and Speed

Easily assembled on-site to quickly create suspended luminaires that replicate the scale of nature

Code Friendly

Coated polyester fabric and fully certified lighting system eliminates regulatory issues where other materials or component-only lighting certification cause problems

A COMPLETE SOLUTION

Integration

Creating good lighting is about more than just putting a light source behind a material. The light source and materials have been tested together to deliver proven performance that incorporates unique knowledge about the interaction between light, material properties, and the geometry of luminous surfaces

Predictable Illumination

Photometric files are available for all standard product options to make specification simple and ensure adherence with design requirements.

More Than a Box of Parts

Cooledge manages the installation process from specification to commissioning saving valuable time otherwise wasted coordinating multiple suppliers



COOLEGE™

COOLEGE SURFACES - SURFACE MOUNT

PHOTOMETRIC HIGHLIGHTS¹

LIGHT OUTPUT² (LM/SQFT)
425 (HF), 210 (MF), 105 (LF)

LIGHT OUTPUT² (LM/SQM)
4500 (HF), 2250 (MF), 1125 (LF)

CORRELATED COLOR TEMPERATURE (CCT)
2700K, 3000K, 3500K, 4000K, 5700K
Tunable White 2700K-5700K

COLOR RENDERING
CRI > 90

COLOR UNIFORMITY
Typical 2 SDCM

LUMEN MAINTENANCE²
L80 = 75,000hr (based on LM-80 & TM-21 calculations)

1 Photometric files available from cooledgelighting.com

2 Based on a 10' x 10' (3m x 3m) area >> refer to SURFACE Size Factors for other sizes

Cooledge has conducted extensive testing on the interaction between the light source and the surface materials to determine the optical and photometric properties of the SURFACE.

COOLEGE SURFACE - GENERAL

MOUNTING TYPE
Surface Mount

SURFACE MATERIAL
Polyurethane-coated knitted polyester fabric

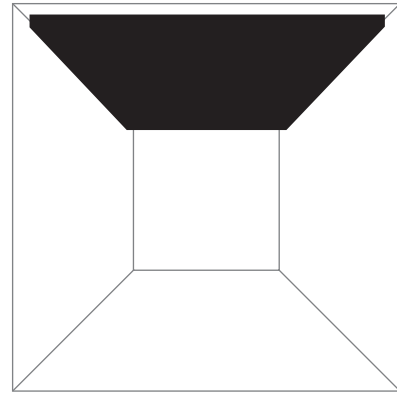
FABRIC TENSIONING PROFILE
Extruded Aluminum

LIGHT SOURCE
Cooledge TILE Interior or TILE Tunable White

DUST PLY INCLUDED
Yes

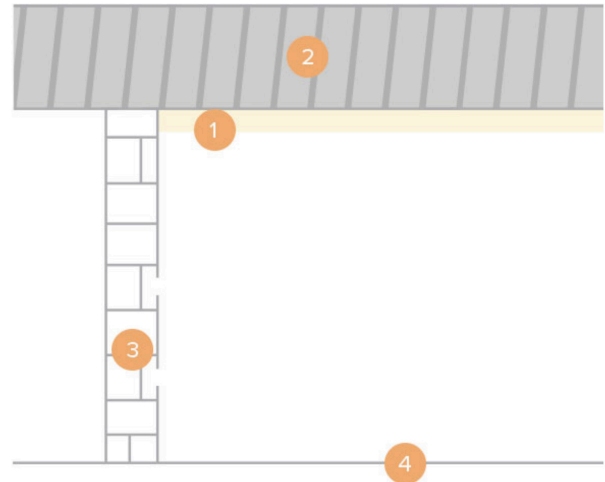
MAXIMUM SEAMLESS DIMENSIONS
16ft (4.9m) x 164ft (50m) (W x L)

MINIMUM CAVITY DEPTH
4in (100mm)



COOLEGE SURFACE OVERVIEW

Cooledge SURFACE - Surface Mount includes the illumination source, mounting hardware, and light emitting surface materials



- 1 COOLEGE TILE Lighting System**
Includes all accessories and LED Drivers required
- 2 Mounting Surface**
- 3 Aluminum Frame**
- 4 Coated Polyester Knitted Fabric**

